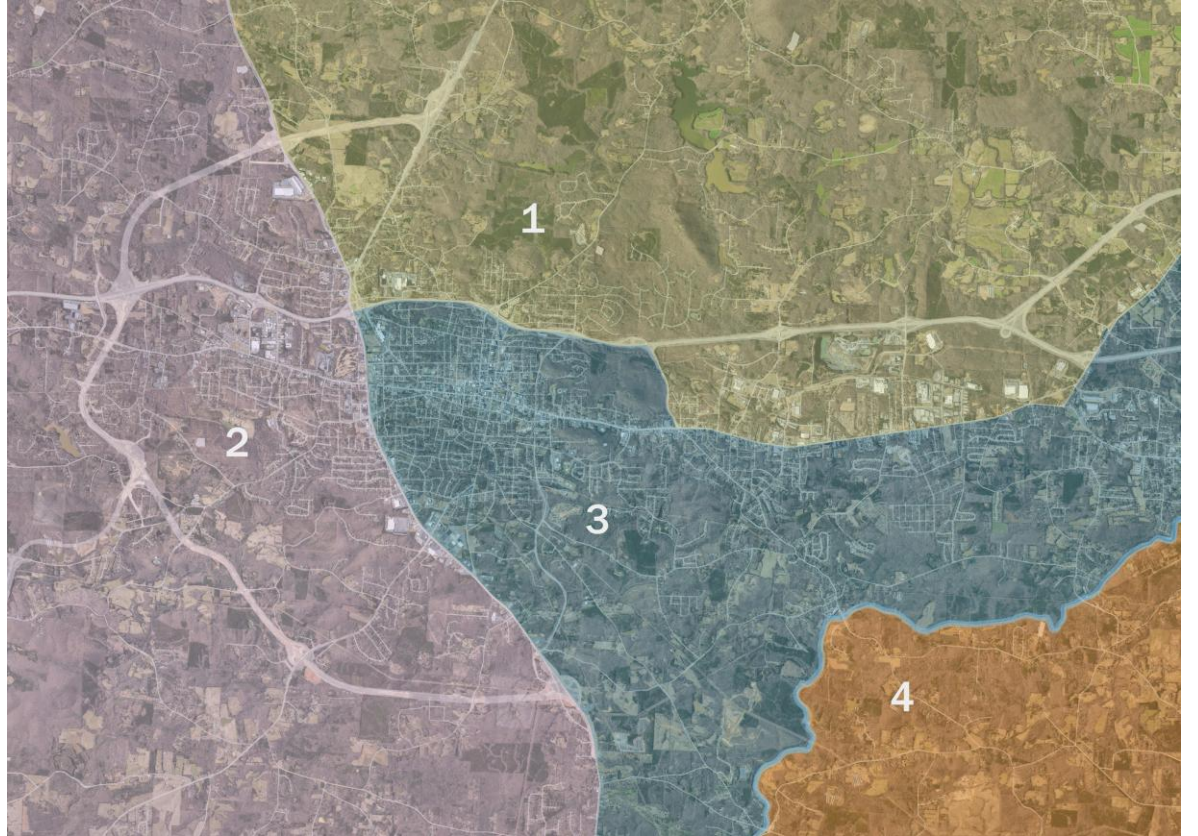


City of Rocky Mount Guiding Principles For Redistricting

Caroline Mackie
Poyner Spruill LLP

Tara Bright
Poyner Spruill LLP

Bill Gilkeson
Demographer



Local Redistricting Service
September 13, 2021



Guiding Principles

- Instructions to demographer
- Required guiding principles
- Optional guiding principles
 - What is important to Rocky Mount and its residents?
 - What should we know about Rocky Mount?
- Contract: 2-3 alternative plans from LRS consultants



Required Guiding Principles

1. To comply with one-person, one-vote constitutional principles, every district's total population should be within plus or minus 5% of the ideal district size.
2. Minority voting strength should not be diluted, but race should not unnecessarily predominate.



One-person, one-vote

City of Rocky Mount Population Imbalance

1. -6.72%
2. -13.23%
3. -2.22%
4. -3.28%
5. +8.88%
6. +11.97%
7. +4.61%



Optional Guiding Principles

1. In order to minimize voter confusion, districts should retain their current configuration, to the extent possible (“core preservation”)
2. Alternatively, the existing district lines should not be considered except to the extent legally required (“blank slate”)
3. Follow natural boundaries and physical features, such as roads or waterways, to the extent possible
4. Use precincts as building blocks for the districts, to the extent possible



Optional Guiding Principles

5. Recognize and respect neighborhood boundaries
6. Recognize and respect communities of interest, to be defined by the Council with public input
7. Avoid the pairing of incumbents in the same district
8. Consider areas of potential future population growth
9. Districts should be reasonably compact, to the extent possible

Questions/Discussion