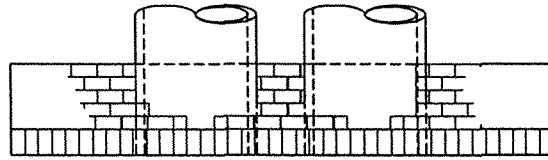
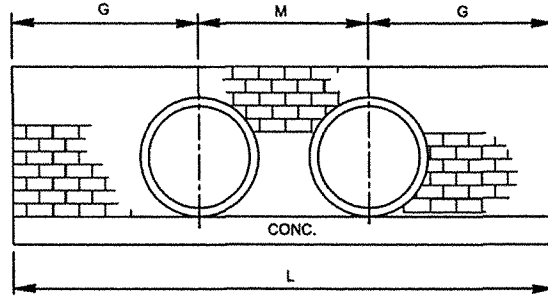


GENERAL NOTES:

- ALL MORTAR JOINTS SHALL BE 1/2" ±1/8"
- BRICKWORK SHALL BE BONDED WITH FULL HEADERS EVERY THREE COURSES.
- ALL EXPOSED JOINTS SHALL BE CONCAVE TOOLED.
- WALL THICKNESS (T) SHOWN IS NOT TO BE INTERPRETED TO MEAN THE THICKNESS ACCEPTABLE, BUT IS USED ONLY IN COMPUTING ENDWALL DIMENSIONS AND QUANTITIES.
- FORMS ARE TO BE USED FOR THE CONSTRUCTION OF THE BASE.
- CLASS "A" CONCRETE SHALL BE USED.
- CONCRETE BRICK MAY BE USED IN LIEU OF CLAY BRICK.
- JUMBO BRICK WILL BE PERMITTED.

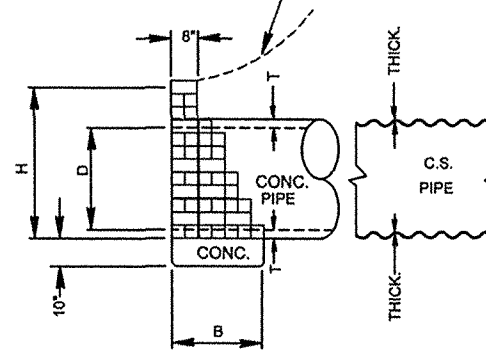


PLAN

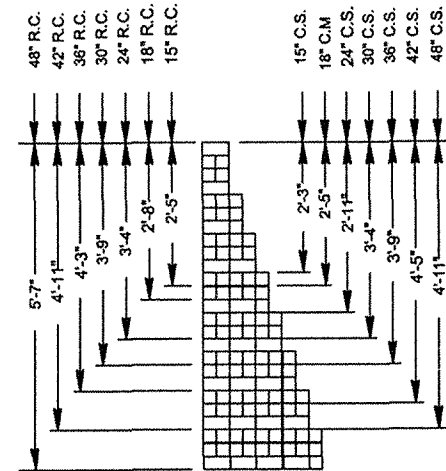


ELEVATION

SLOPE AS INDICATED ON PLANS



END ELEVATION



TYPICAL SECTION THRU WALL

DIMENSIONS AND QUANTITIES																							
USING CONCRETE PIPE												USING CORRUGATED METAL PIPE											
COMMON DIMS.												COMMON DIMS.											
SINGLE PIPE												SINGLE PIPE											
D	H	B	G	T	L	BRICK YR2	CONC. YR2	M	L	BRICK YR2	CONC. YR2	D	H	B	G	L	L	BRICK YR2	CONC. YR2	M	L	BRICK YR2	CONC. YR2
15"	2'-5"	1'-8"	2'-10"	1 7/8"	5'-8"	0.441	0.291	2'-2"	7'-10"	0.655	0.403	15"	2'-3"	1'-4"	2'-9"	5'-6"	5'-6"	0.384	0.228	1'-11"	7'-5"	0.482	0.305
18"	2'-8"	1'-9"	3'-2"	2"	6'-4"	0.562	0.326	2'-7"	8'-11"	0.722	0.459	18"	2'-5"	1'-8"	3'-0"	6'-0"	6'-0"	0.478	0.309	2'-3"	8'-3"	0.605	0.424
24"	3'-4"	2'-0"	4'-1"	2 1/2"	6'-2"	1.008	0.504	3'-5"	11'-7"	1.285	0.715	24"	2'-11"	1'-6"	3'-8"	7'-6"	7'-6"	0.749	0.388	3'-0"	10'-6"	0.954	0.540
30"	3'-9"	2'-4"	4'-8"	2 3/4"	6'-4"	1.391	0.672	4'-3"	13'-7"	1.820	0.978	30"	3'-4"	2'-0"	4'-6"	8'-10"	8'-10"	1.090	0.545	3'-9"	12'-7"	1.399	0.777
36"	4'-3"	2'-4"	5'-5"	3"	10'-10"	1.895	0.780	5'-0"	15'-10"	2.462	1.140	36"	3'-9"	2'-4"	5'-0"	10'-0"	10'-0"	1.503	0.720	4'-6"	14'-6"	1.965	1.044
42"	4'-11"	2'-8"	6'-4"	3 1/2"	12'-8"	2.667	1.043	5'-10"	18'-6"	3.729	1.523	42"	4'-5"	2'-8"	6'-0"	12'-0"	12'-0"	2.373	0.988	5'-3"	17'-3"	3.062	1.420
48"	5'-7"	3'-0"	7'-3"	4"	14'-6"	4.032	1.343	6'-8"	21'-2"	5.184	1.960	48"	4'-11"	2'-8"	6'-9"	13'-6"	13'-0"	3.102	1.111	6'-0"	19'-6"	4.002	1.808

STANDARD BRICK ENDWALL FOR SINGLE & DOUBLE PIPE CULVERTS
15" THRU 48" PIPE-90 ° SKEW

REVISIONS		
NO	DATE	DESCRIPTION

CITY OF ROCKY MOUNT
DEPT. OF ENGINEERING

APPROVED
DATE
07-13-01

STD. NO.
6.28
REVISION