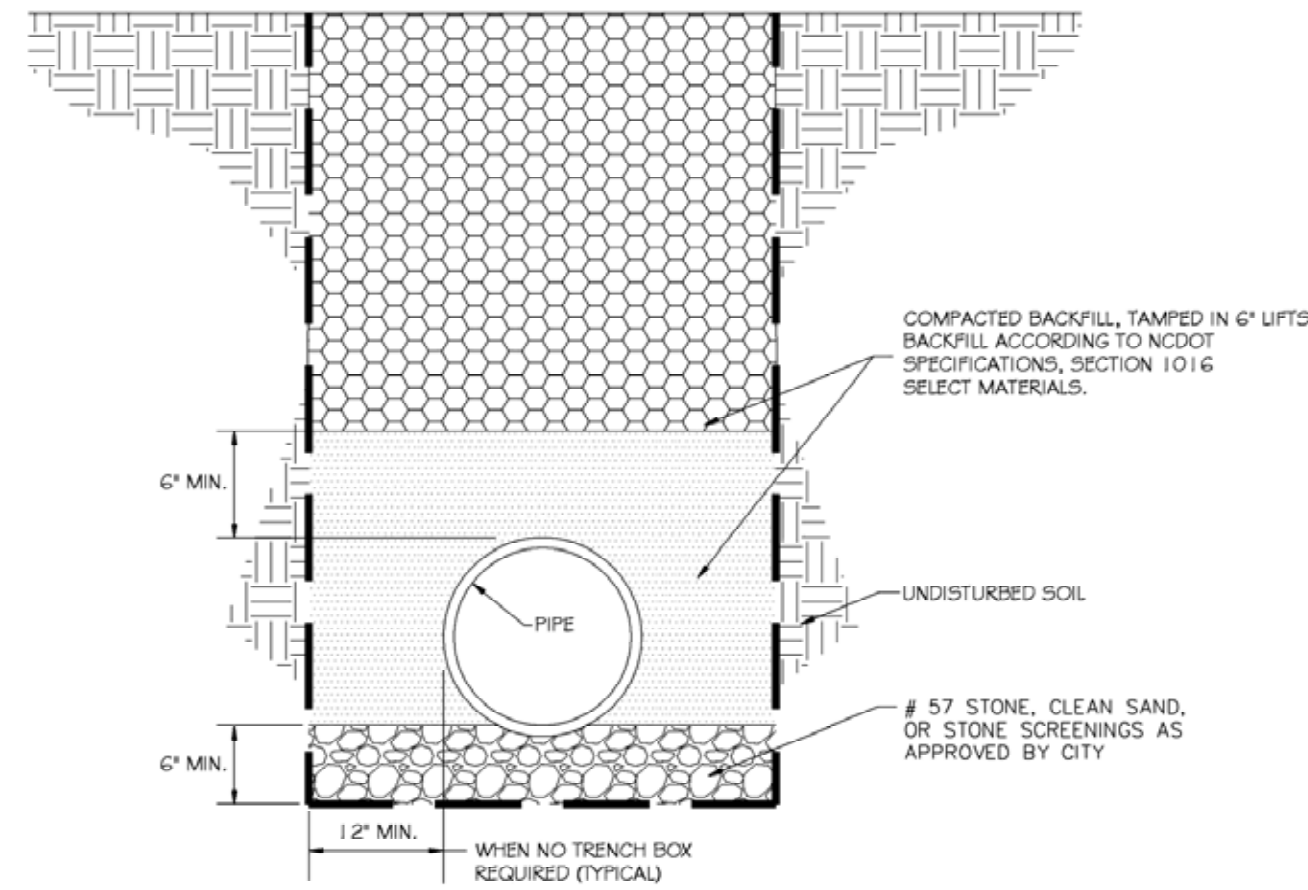



 <p>CITY OF ROCKY MOUNT NORTH CAROLINA DEPARTMENT OF ENGINEERING</p>	<p>PAVEMENT PATCHING UTILITY INSTALLATION</p>	DATE: OCTOBER 2012	STANDARD # 1.1
		APPROVED:	SHEET # 1 OF 1
			REVISION:



	<p>STANDARD BEDDING DETAILS FOR REINFORCED CONCRETE PIPE</p>	DATE: AUGUST 2017	STANDARD #: 1.G
		APPROVED:	SHEET # 1 OF 2
			REVISION:

NOTES

MATERIAL CLASSIFICATIONS:

CLASS I
CLASS I SELECT MATERIAL IS A SILTY OR CLAYEY SOIL MATERIAL MEETING AASHTO M 145 FOR SOIL CLASSIFICATION A-4. SOIL MATERIALS WHICH MEET AASHTO M 145 FOR SOIL CLASSIFICATION A-2, A-5, A-6 AND A-7 ARE ACCEPTABLE PROVIDED SUCH MATERIALS DO NOT HAVE A LL GREATER THAN 50, NOR A PI OF LESS THAN 7 OR GREATER THAN 20.


CLASS II
TYPE I SELECT MATERIAL
TYPE I SELECT MATERIAL IS A FINE AGGREGATE MATERIAL CONSISTING OF CRUSHED STONE SCREENINGS (WASHED OR UNWASHED) MEETING THE GRADATION IN TABLE 1.

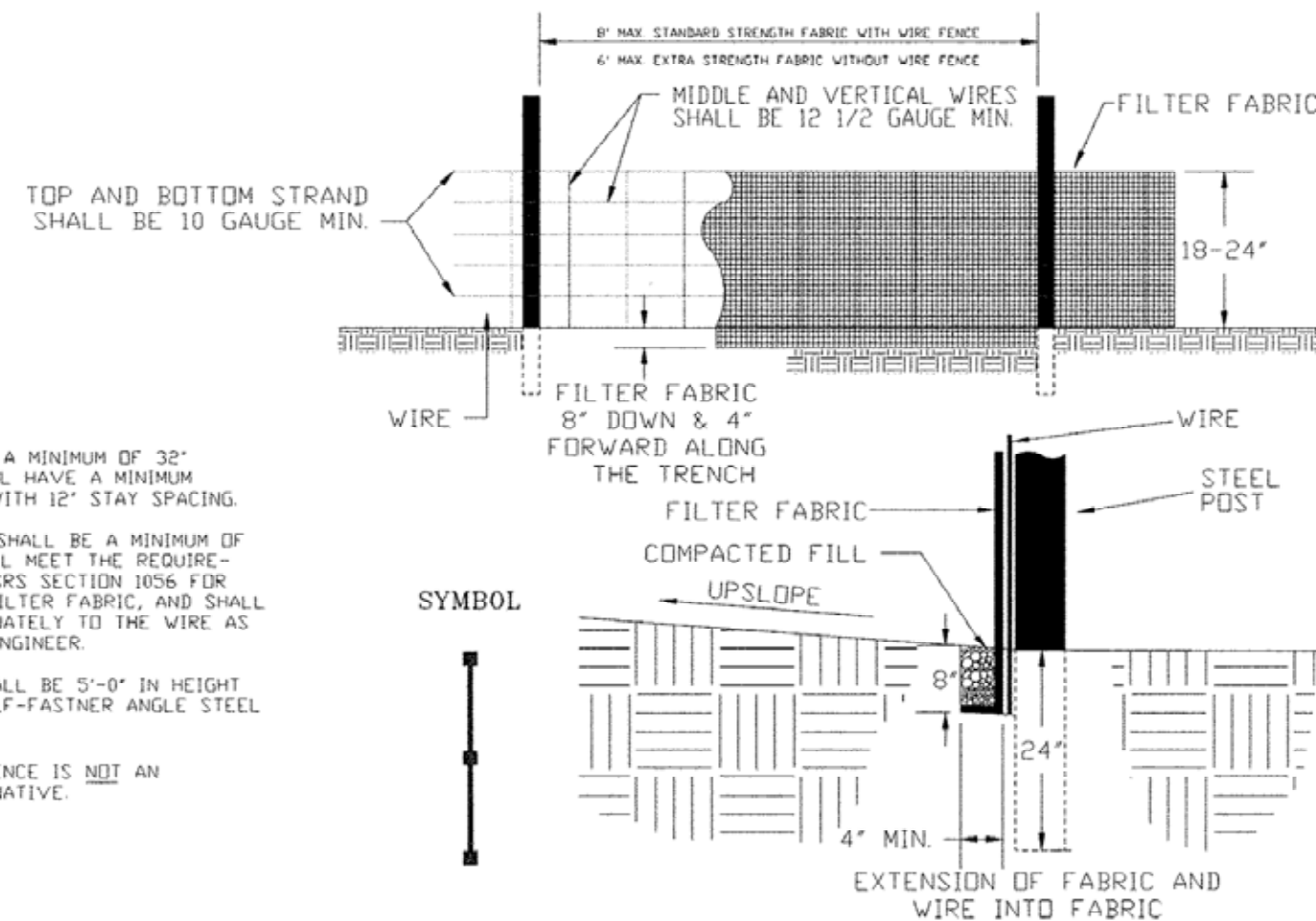
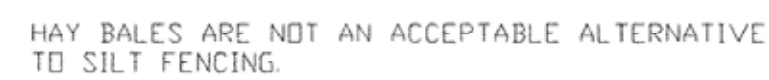
TYPE 2 SELECT MATERIAL IS A GRANULAR SOIL MATERIAL MEETING AASHTO M 145 FOR SOIL CLASSIFICATIONS A-2-4 WITH A MAXIMUM PI OF 6 AND A-4 SOIL CONTAINING 45% MAXIMUM PASSING A NO. 200 SIEVE AND A MAXIMUM PI OF 6. WHEN TYPE IS NOT SPECIFIED, EITHER TYPE MAY BE USED, BUT NO ADDITIONAL COMPENSATION WILL BE MADE.

CLASS III
TYPE 1 SELECT MATERIAL
TYPE 1 SELECT MATERIAL IS A NATURAL OR MANUFACTURED FIN AGGREGATE MATERIAL MEETING THE GRADATION REQUIREMENTS OF STANDARD SIZE 25 OR 2M5 IN TABLE 1005-2 AS DESCRIBED IN SECTIONS 1005 AND 1006.
TYPE 2 SELECT MATERIAL
TYPE 2 SELECT MATERIAL IS A GRANULAR SOIL MATERIAL MEETING AASHTO M 145 FOR SOIL CLASSIFICATION A-1 OR A-3. WHEN A TYPE IS NOT SPECIFIED, EITHER TYPE MAY BE USED, BUT NO ADDITIONAL COMPENSATION WILL BE MADE.

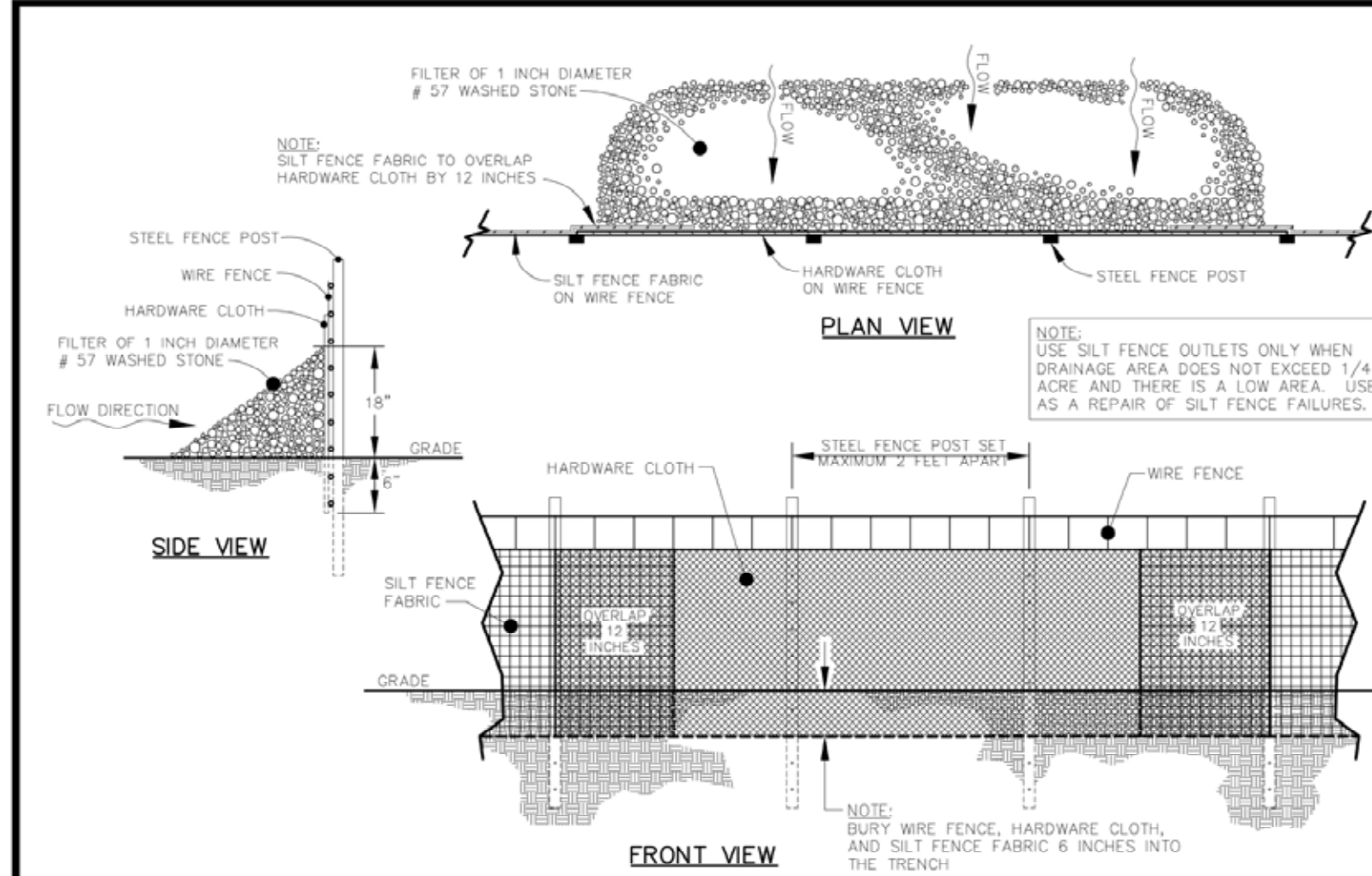
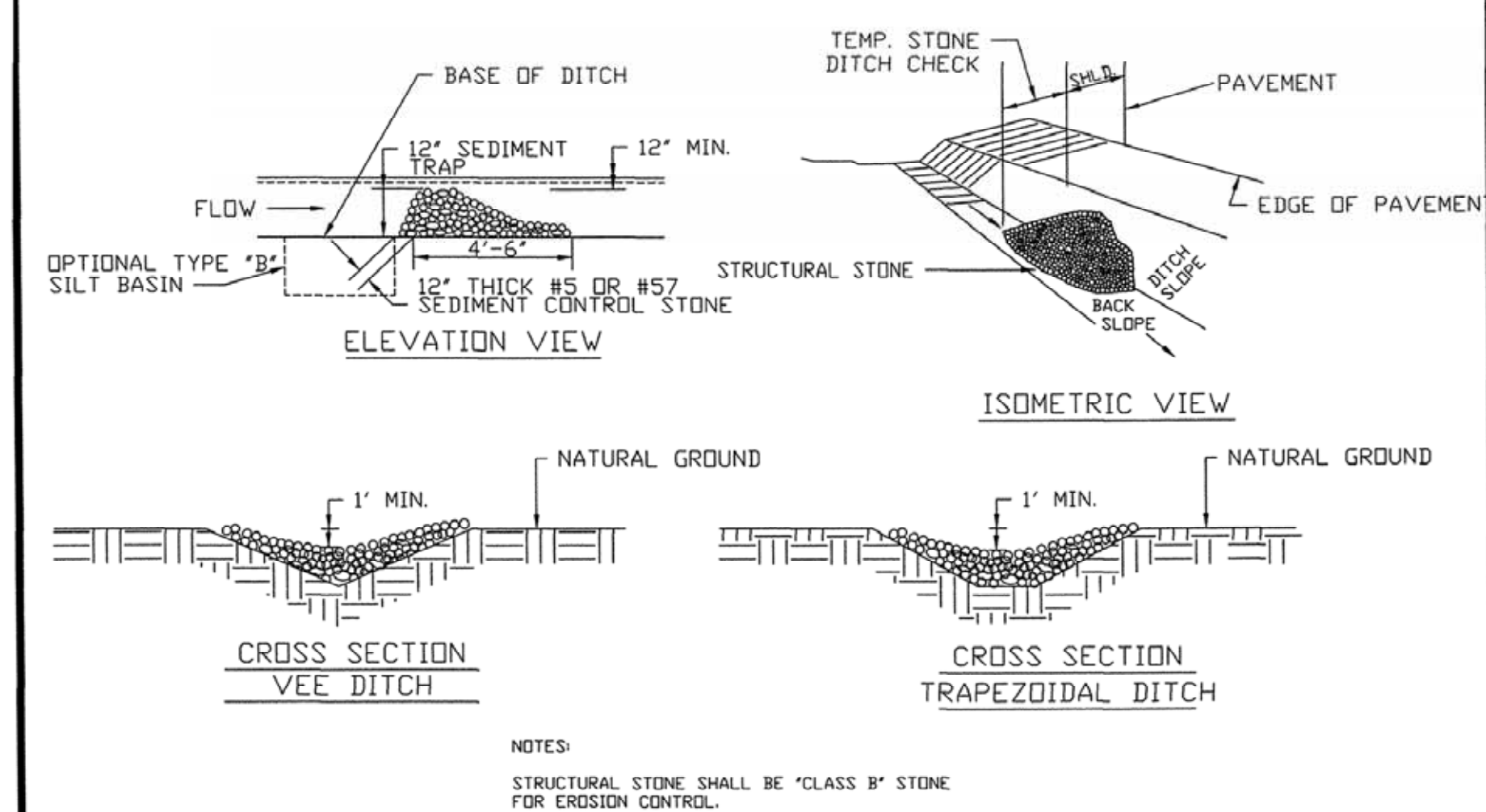
CLASS IV
CLASS IV SELECT MATERIAL IS A COARSE AGGREGATE MATERIAL MEETING THE GRADATION REQUIREMENTS OF STANDARD SIZE ABC AS DESCRIBED IN SECTION 1010.

CLASS V
CLASS V SELECT MATERIAL IS A COARSE AGGREGATE MATERIAL MEETING THE GRADATION REQUIREMENTS OF STANDARD SIZE 75MM IN TABLE 1005-1 AS DESCRIBED IN SECTION 1005 AND 1006.

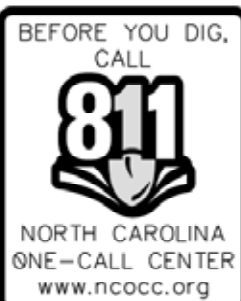
	STANDARD BEDDING DETAILS FOR REINFORCED CONCRETE PIPE	DATE: DECEMBER 2016	STANDARD #: 1.6
		APPROVED:	SHEET # 2 OF 2
			REVISION:



TEMPORARY SEDIMENT (SILT) FENCE				
REVISIONS		CITY OF ROCKY MOUNT DEPT. OF ENGINEERING	APPROVED	STD. NO.
NO DATE	DESCRIPTION		-	3.3
			DATE	REVISION
			06-26-07	-

[illegible]

TEMPORARY ROCK SILT CHECK TYPE-B									
REVISIONS			CITY OF ROCKY MOUNT DEPT. OF ENGINEERING				APPROVED	STD. NO.	
NO.	DATE	DESCRIPTION					-	3.9	
							DATE	REVISION	
							04-10-00	-	



These plans are for bidding purposes only and are not to be used as Construction drawings unless initialed and dated as approved for Construction below by the Engineer.

Approved for Construction: _____ Date: _____

BOUNDARY DESCRIPTION SHOWN
IS NOT FOR RECORDATION.

RECORD DRAWINGS:
These drawings are believed to be a correct representation of actual field conditions but are not warranted as such.

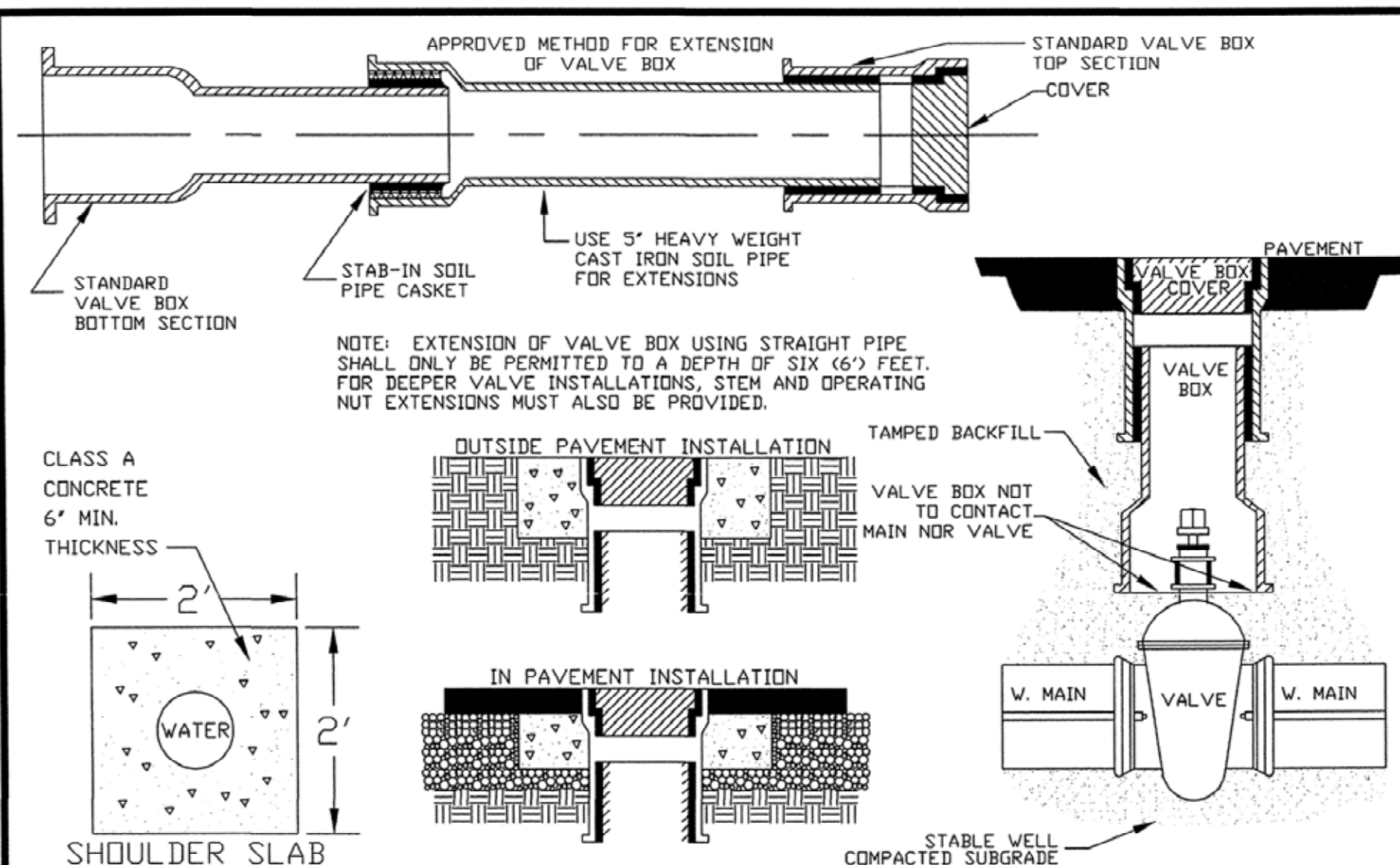
By: _____ Date: _____

CONSTRUCTION SAFETY
These drawings do not contain the requirements for job safety. All provisions for safety shall be the sole responsibility of the contractor.

EXISTING CONDITIONS:
The contractor shall be responsible for reviewing all existing job conditions. Any adverse existing conditions affecting work shown on these drawings shall be brought to the attention of the engineer for possible clarification or reconciliation.

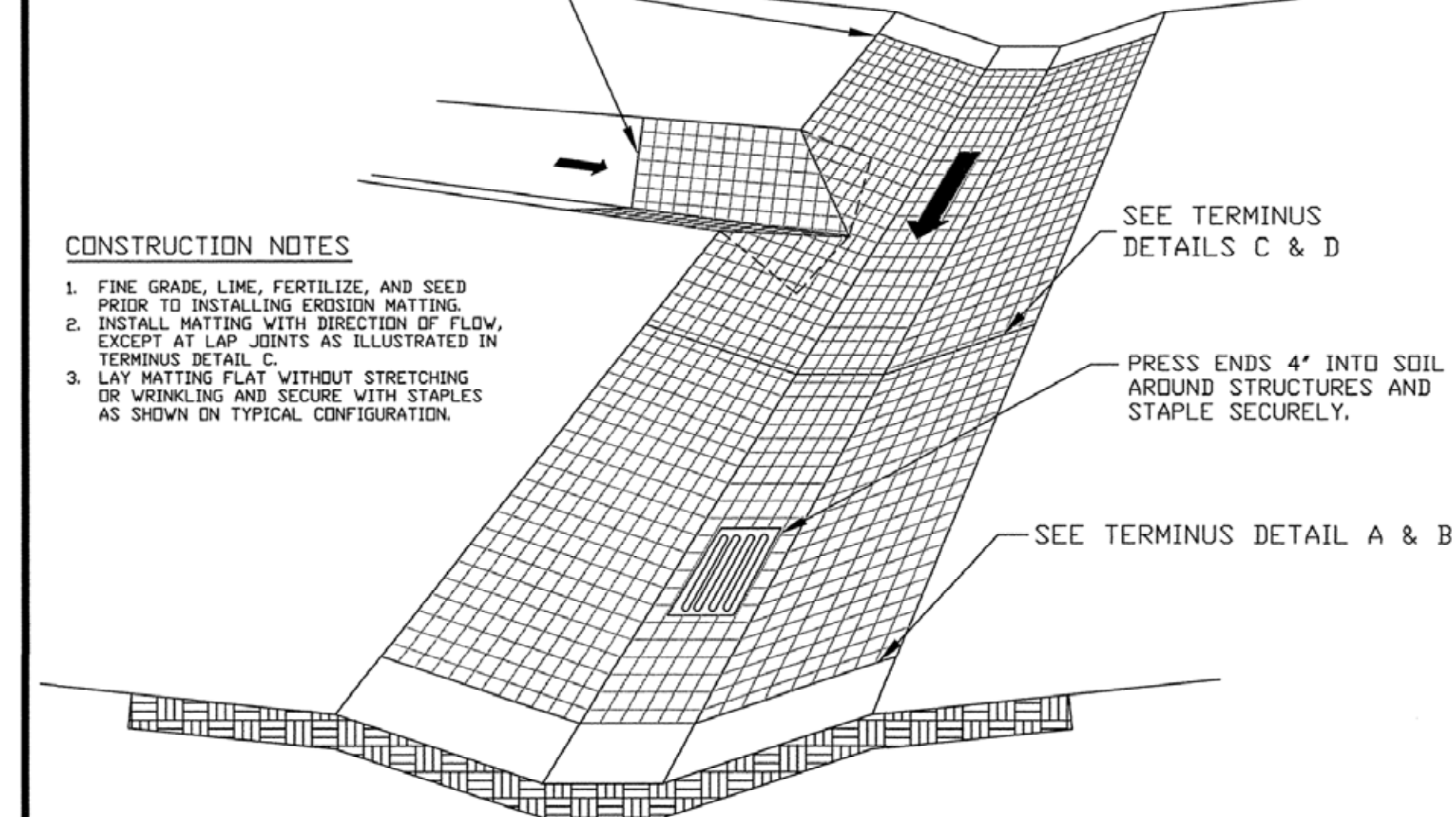
ADA AND LEGAL DISCLAIMER

This document is not represented to comply with all requirements contained in the ADA or other laws. Engineers are not licensed to interpret laws or give advice concerning laws, the owner should have this document reviewed by his attorney to determine legal compliance.



VALVE BOX INSTALLATION DETAILS				
REVISIONS		CITY OF ROCKY MOUNT DEPT. OF ENGINEERING	APPROVED	STD. NO.
NO	DATE		-	5.10
DESCRIPTION			DATE	REVISION
			04-07-00	-

SEE TERMINUS DETAILS A & B -



CHANNEL STABILIZATION W/EROSION MATTING (SHEET 1 OF 3)				
REVISIONS NO. DATE DESCRIPTION		CITY OF ROCKY MOUNT DEPT. OF ENGINEERING	APPROVED -	STD. NO. 3.12
			DATE 10-09-03	REVISION -

[illegible]

CONSULTING ENGINEERS, P.A.
CIVIL, MUNICIPAL &
STRUCTURAL ENGINEERS
BLN = C0562

154 Roundabout Ct.
P.O. Box 7966
Rocky Mount, N.C. 27804
Phone: (252) 972-7703

www.appianengineers.com
admin@appianengineers.com

THESE PLANS WERE
PRINTED USING COLOR.
IF THIS NOTE IS NOT SHOWN
IN RED, PLEASE REFER TO
ORIGINAL PLANS.

Final Drawings
Review Purposes ONLY



**CONSTRUCTION DETAILS for
Dirt Street Paving Project:
Lewy Lane & Triple Court
Edgecombe County, Rocky Mount, N.C.**

21-124

D-0000

D-1