



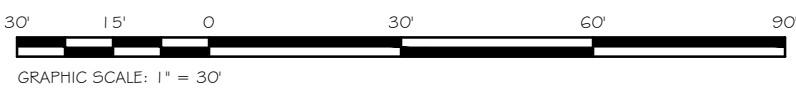
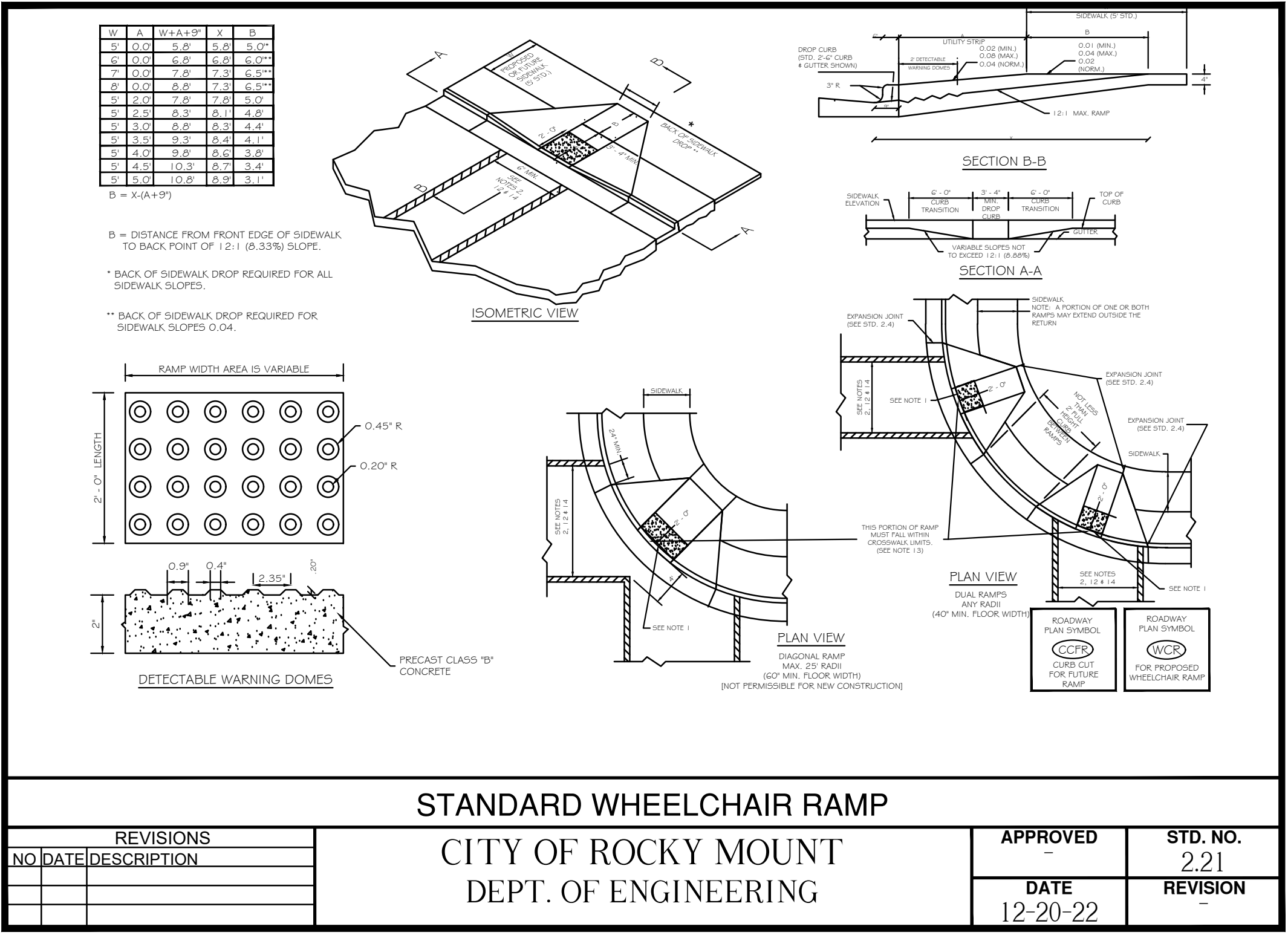
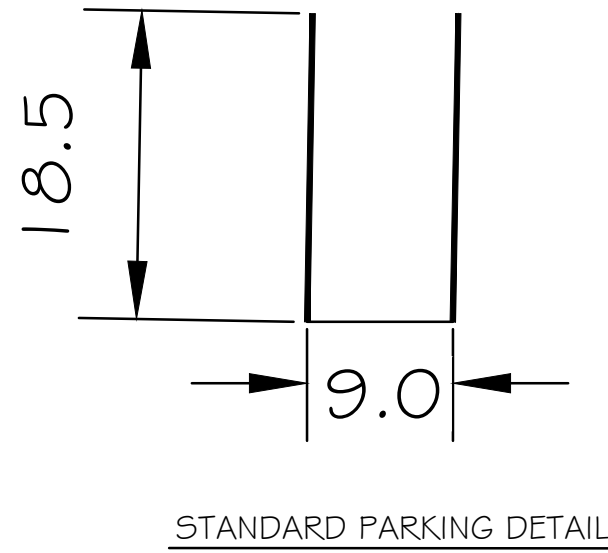


LEGEND		
	EXISTING CURB & GUTTER	
	PROPOSED CURB & GUTTER	1,856 L.F.
	EXISTING CURB & GUTTER TO BE REMOVED	1,784 L.F.
	PROPOSED SEAL COAT OVERLAY	12,564 S.Y.
PARKING:		
PROPOSED PARKING: HANDICAP REGULAR		8 305
TOTAL PROP. PARKING		313

[illegible]

CITY HALL PARKING LOT
RENOVATIONS

CITY OF ROCKY MOUNT
NASH COUNTY NORTH CAROLINA



ROCKY MOUNT
PUBLIC WORKS
THE CENTER OF IT ALL

SHEET TITLE:
SitePlan

DATE:	09-28-2022
SURVEYED BY:	E.H.C.
DESIGNED BY:	S.M.
DRAWN BY:	M.C.
CHECKED BY:	S.M.
SCALE:	AS NOTED

SHEET NUMBER:	1	OF	1
SHEET			

SP