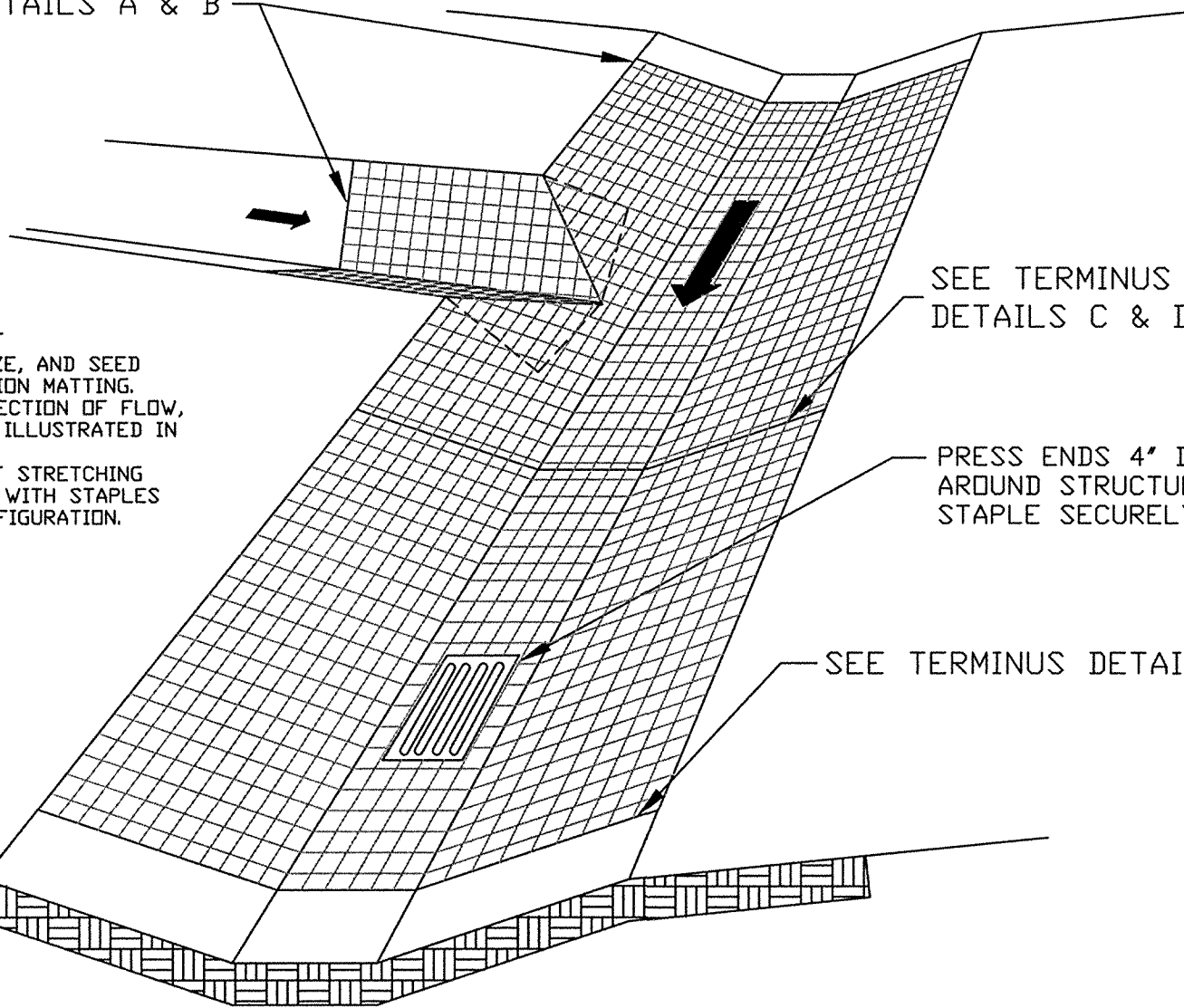


SEE TERMINUS DETAILS A & B



SEE TERMINUS  
DETAILS C & D

PRESS ENDS 4" INTO SOIL  
AROUND STRUCTURES AND  
STAPLE SECURELY.

SEE TERMINUS DETAIL A & B

CONSTRUCTION NOTES

1. FINE GRADE, LIME, FERTILIZE, AND SEED PRIOR TO INSTALLING EROSION MATTING.
2. INSTALL MATTING WITH DIRECTION OF FLOW, EXCEPT AT LAP JOINTS AS ILLUSTRATED IN TERMINUS DETAIL C.
3. LAY MATTING FLAT WITHOUT STRETCHING OR WRINKLING AND SECURE WITH STAPLES AS SHOWN ON TYPICAL CONFIGURATION.

**CHANNEL STABILIZATION W/EROSION MATTING (SHEET 1 OF 3)**

**CITY OF ROCKY MOUNT  
DEPT. OF ENGINEERING**

**APPROVED**  
-

**STD. NO.**  
3.12

**DATE**  
10-09-03

**REVISION**  
-

REVISIONS		
NO	DATE	DESCRIPTION