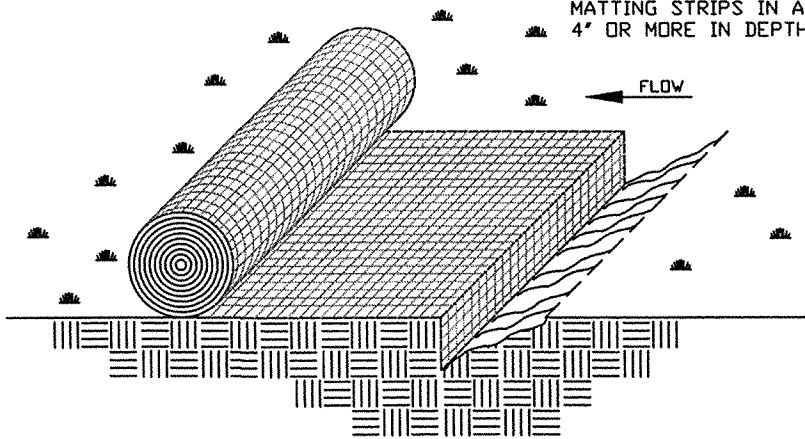


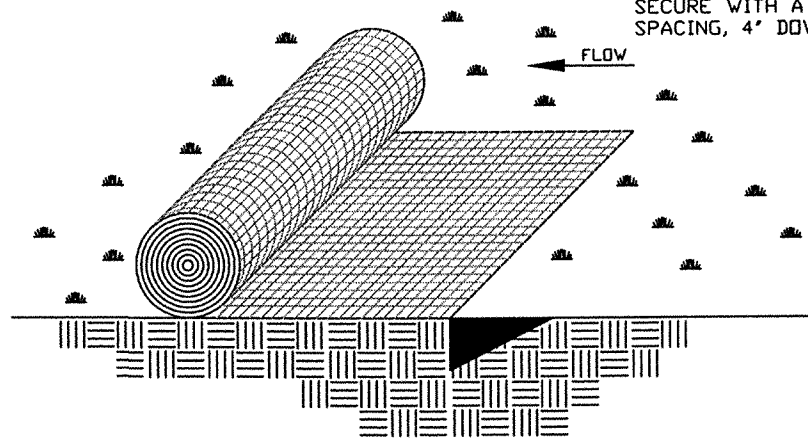
TERMINUS DETAIL A

NOTE: BURY THE TOP END OF THE MATTING STRIPS IN A TRENCH 4" OR MORE IN DEPTH.



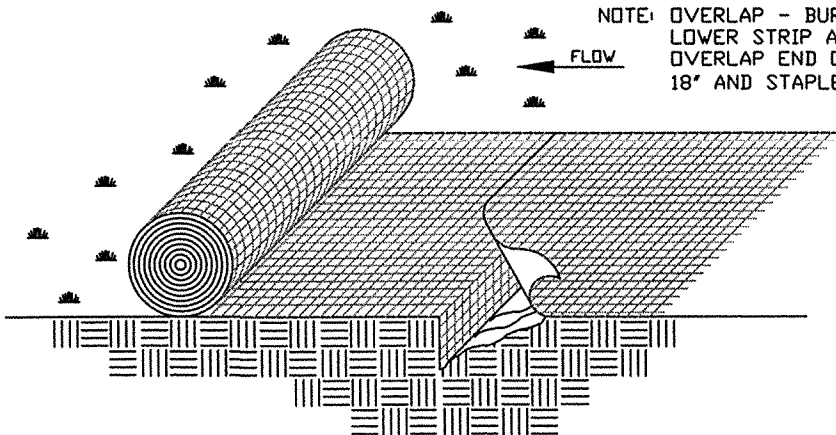
TERMINUS DETAIL B

NOTE: TAMP THE TRENCH FULL OF SOIL. SECURE WITH A ROW OF STAPLES, 10' SPACING, 4' DOWN FROM THE TRENCH.



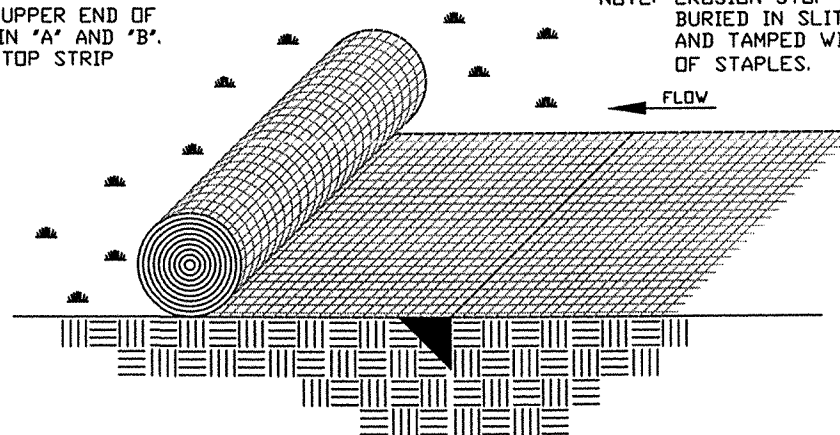
TERMINUS DETAIL C

NOTE: OVERLAP - BURY UPPER END OF LOWER STRIP AS IN 'A' AND 'B'. OVERLAP END OF TOP STRIP 18" AND STAPLE.



TERMINUS DETAIL D

NOTE: EROSION STOP - FOLD OF MATTING BURIED IN SLIT TRENCH AND AND TAMPED WITH DOUBLE ROW OF STAPLES.



CHANNEL STABILIZATION W/EROSION MATTING (SHEET 2 OF 3)

REVISIONS		
NO	DATE	DESCRIPTION

CITY OF ROCKY MOUNT
DEPT. OF ENGINEERING

APPROVED	-
DATE	04-10-00

STD. NO.	3.13
REVISION	-