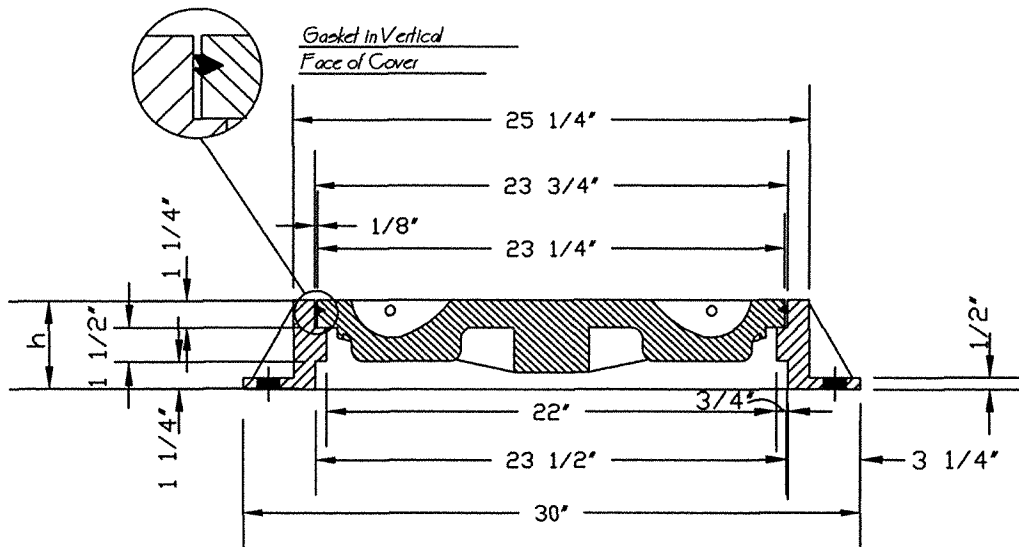


EST. WEIGHTS-LBS	
h = 4"	243
h = 7 1/2"	350



SPECIFICATION
CLASS 30 CAST IRON
MEETING ASTM A-48 WITH
FULL BITUMINOUS COATING

SECTION A-A

WATERTIGHT MANHOLE RING & COVER

REVISIONS		
NO	DATE	DESCRIPTION

CITY OF ROCKY MOUNT
DEPT. OF ENGINEERING

APPROVED
-

STD. NO.
4.7

DATE
02-19-03

REVISION
-