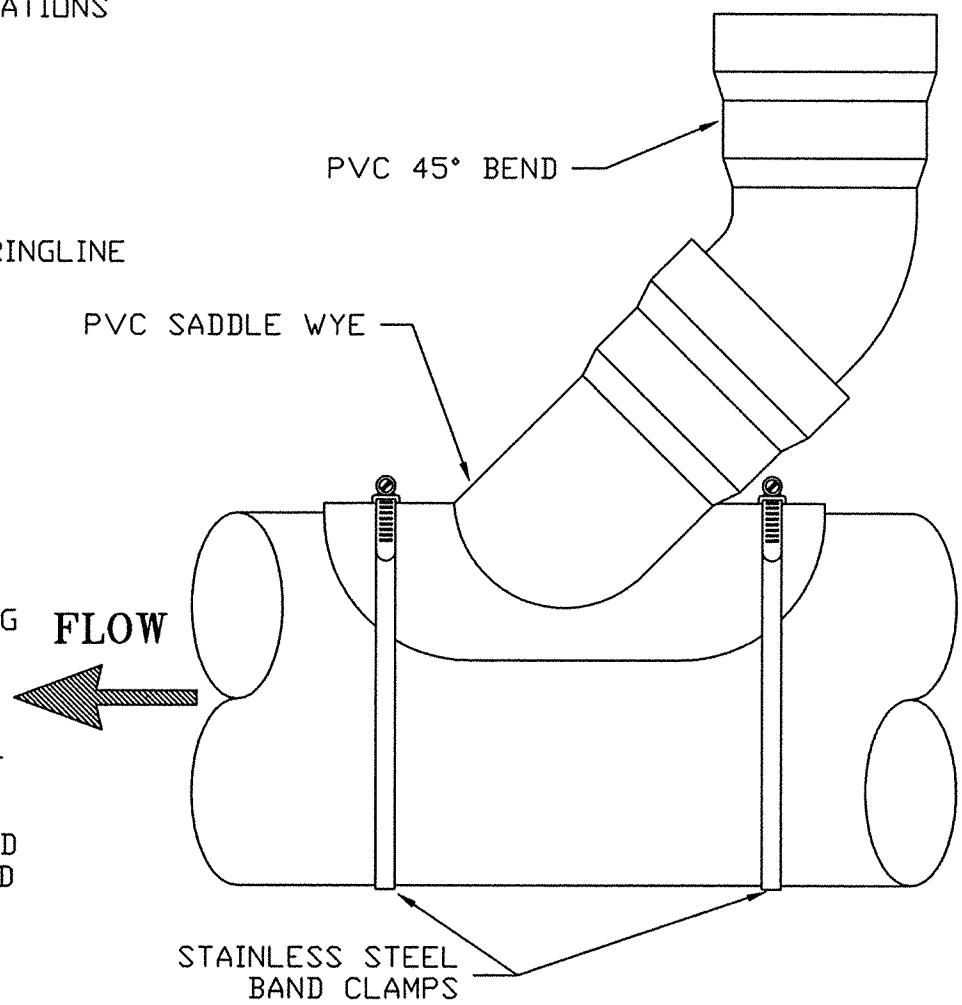


NOTES:

1. TAPS FOR SADDLES SHALL BE SAW CUT USING KEY HOLE OR SABER SAW AND MANUFACTURER'S TEMPLATE.
2. TAP SHALL BE SMOOTH AND CLEANED OF ALL SAWDUST, BURS, DIRT, DEBRIS, ETC.
3. TAP AND SADDLE SHALL BE SOLVENT WELDED USING MANUFACTURER'S RECOMMENDED PRIMER AND SOLVENT CEMENT.
4. SADDLE CONNECTION SHALL BE REINFORCED WITH TWO STAINLESS STEEL BAND CLAMPS.



4" SERVICE CONNECTION ON EXIST. PVC MAIN

REVISIONS		
NO.	DATE	DESCRIPTION

**CITY OF ROCKY MOUNT
DEPT. OF ENGINEERING**

APPROVED -	STD. NO. 4.14
DATE 04-10-99	REVISION -