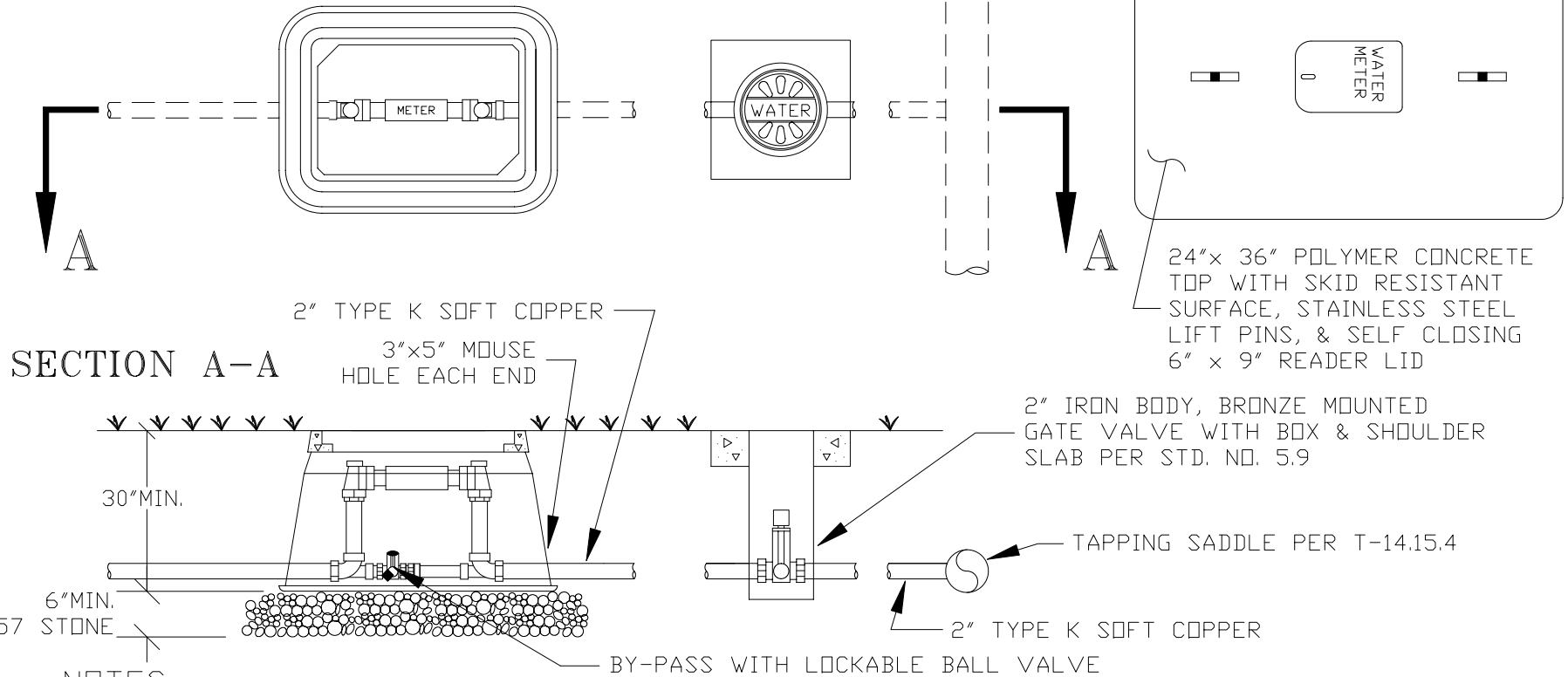


# PLAN VIEW (TOP REMOVED)

# TOP WITH READER LID



## NOTES:

- METER ONLY SHALL BE PURCHASED FROM THE CITY OF ROCKY MOUNT.
- VAULT TOP & FRAME SHALL BE MADE OF 11,000 PSI FIBER & POLYMER REINFORCED CONCRETE. VAULT SHALL HAVE MIN. DIMENSIONS OF 24" WIDE X 36" LONG X 30" DEEP & SHALL BE MODEL # WA00-2436-30C BY CDR SYSTEMS CORP., QUAZITE MODEL # PG2436BB30 BY STRONGWELL, INC., OR AN APPROVED EQUAL.
- METER SETTER SHALL BE MANUFACTURED BY FORD METER CO. OR AN APROVED EQUAL AND SHALL BE AS FOLLOWS:

METER SIZE	METER TYPE	SETTER MODEL NO.
2"	DISK	VV77-18B-11-77

## 2" STANDARD WATER METER VAULT

CITY OF ROCKY MOUNT  
DEPT. OF ENGINEERING

APPROVED

—

STD. NO.

5.7

DATE

10-19-09

REVISION

—

## REVISIONS

NO	DATE	DESCRIPTION
----	------	-------------
