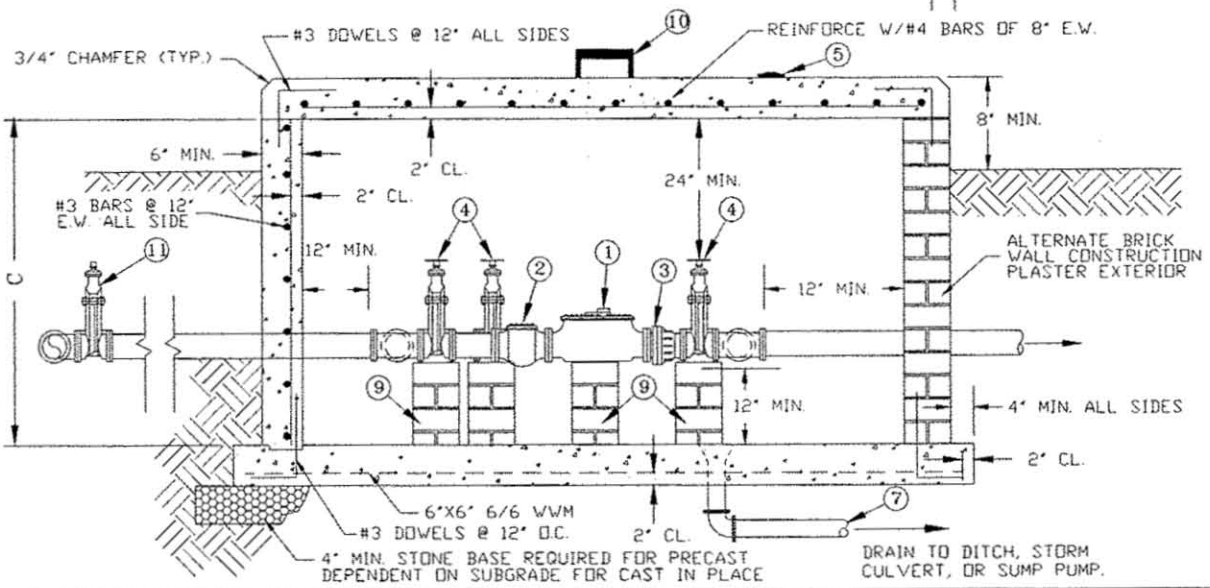


CONSTRUCTION NOTES:

1. CONCRETE SHALL HAVE 4,000 PSI MIN. COMPRESSIVE STRENGTH AT 28 DAYS.
2. REINFORCING BARS SHALL BE GRADE 60 DEFORMED STEEL.
3. METERS SHALL BE PURCHASED FROM CITY AND READ IN CUBIC FEET.
4. WHERE WALL MOUNTED STEPS ARE NOT ACCESSIBLE FROM HATCH, A PERMANENTLY MOUNTED LADDER MEETING O.S.H.A. STANDARDS SHALL BE PROVIDED.
5. RELOCATE REINFORCEMENT AROUND HATCH TO PROVIDE EQUIVALENT STEEL CROSS-SECTION.

MIN. VAULT DIMENSIONS			
METER SIZE	A	B	C
3'	8'-6"	5'-6"	5'-0"
4'	9'-6"	5'-6"	5'-0"
6'	11'-0"	6'-0"	5'-6"
8'	12'-0"	7'-0"	6'-0"
10'	14'-0"	8'-0"	6'-0"



- ① AWWA C701 TURBINE METER OR AWWA C702 COMPOUND METER w/ENCODING REGISTER FOR REMOTE READING
- ② STRAINER BY METER MANUFACTURER
- ③ FLANGED COUPLING ADAPTER
- ④ AWWA C509 GATE VALVE w/HAND WHEEL
- ⑤ AMR ITRON 50 W2 PIT ERT AND COMPATIBLE REGISTER
- ⑥ SINGLE OR DOUBLE LEAF ALUMINUM HATCH PER STD. NO. 5.26
- ⑦ GRAVITY DRAIN TO DAYLIGHT OR SUMP PUMP WITH FORCE MAIN TO STORM SEWER SYSTEM
- ⑧ WATERTIGHT GASKET w/HYDRAULIC CEMENT SEAL
- ⑨ SOLID MASONRY PIER FIXTURE SUPPORTS
- ⑩ STEPS PER STD. NO. 4.8 SPACED AT 16" O.C.
- ⑪ IN-LINE TEE OR TAPPING SLEEVE w/VALVE ROADWAY BOX, & SLAB PER STD. NO. 5.9

STANDARD METER VAULT (3" THROUGH 10")

REVISIONS		
NO	DATE	DESCRIPTION

CITY OF ROCKY MOUNT
DEPT. OF ENGINEERING

APPROVED -	STD. NO. 5.8
DATE 10-21-08	REVISION -