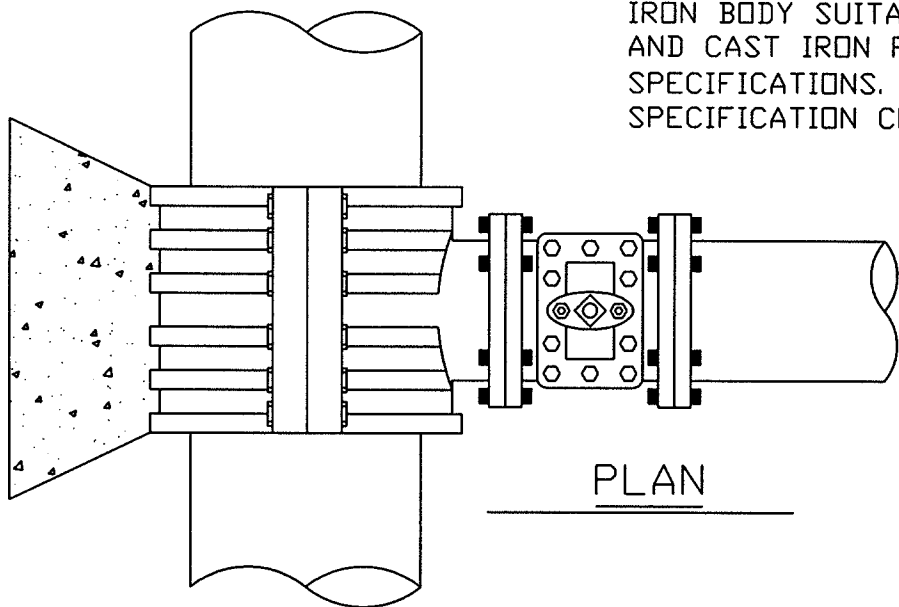
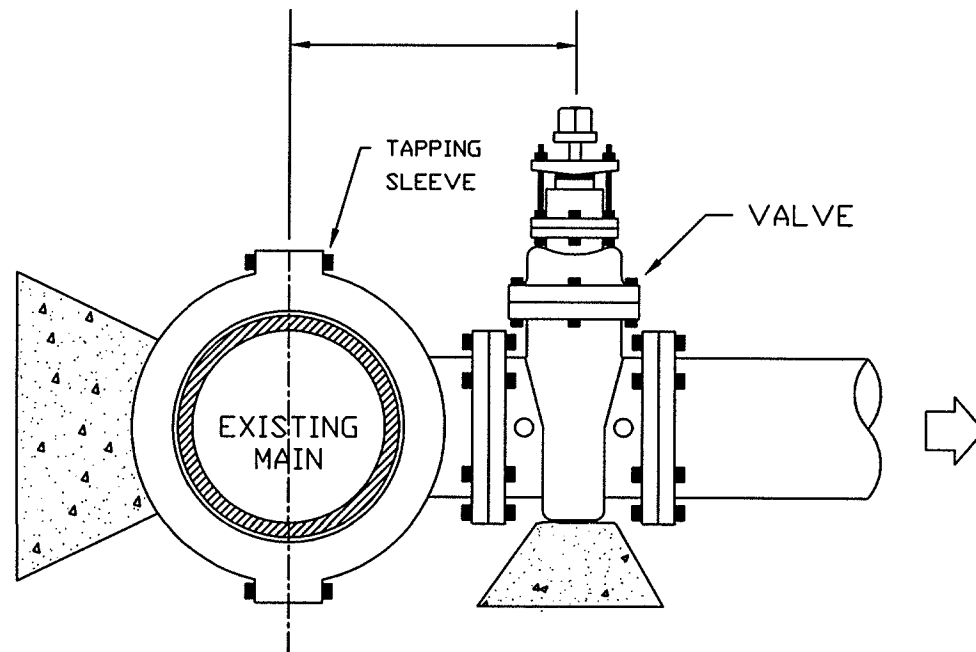


NOTE: MECHANICAL JOINT TAPPING SLEEVES SHALL HAVE A WORKING PRESSURE OF NOT LESS THAN 200 PSI HAVING RIGID CAST DUCTILE IRON BODY SUITABLE FOR INSTALLATION ON BOTH DUCTILE IRON PIPE AND CAST IRON PIPE WITH OUTLET FLANGES PER ANSI/AWWA C110/A21.10 SPECIFICATIONS. THE VALVE SHALL BE MANUFACTURED TO AWWA SPECIFICATION CLASS 350, OPEN LEFT.



PLAN

SOLID CONCRETE OR BRICK BLOCKING SHALL BE USED AS FOOTING FOR DUCTILE IRON PIPE



NOTES

1. CONCRETE SHALL NOT CONTACT BOLTS OR ENDS OF MECHANICAL JOINT FITTINGS.
2. SEE STANDARD THRUST BLOCK TABLES, FOR AREA OF CONCRETE REQUIRED.
3. 2500 PSI CONCRETE CLASS B REQUIRED.
4. TAPPING SLEEVE & VALVE SHALL BE BOLTED IN PLACE & PRESSURE TESTED PRIOR TO TAPPING OF EXISTING MAIN.

TAPPING SLEEVE & VALVE

CITY OF ROCKY MOUNT
DEPT. OF ENGINEERING

APPROVED

-

STD. NO.

5.12

DATE

04-04-06

REVISION

-

REVISIONS		
NO	DATE	DESCRIPTION