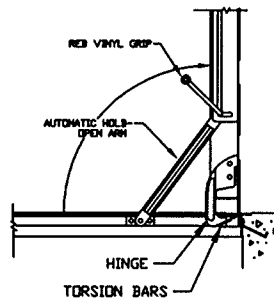
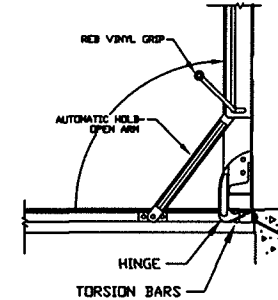
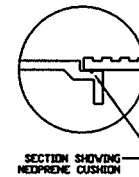
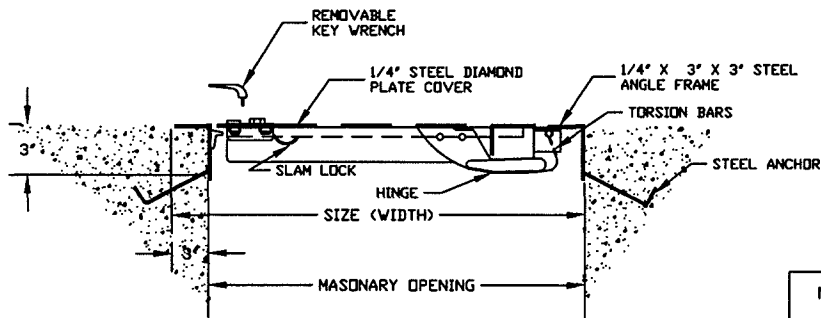
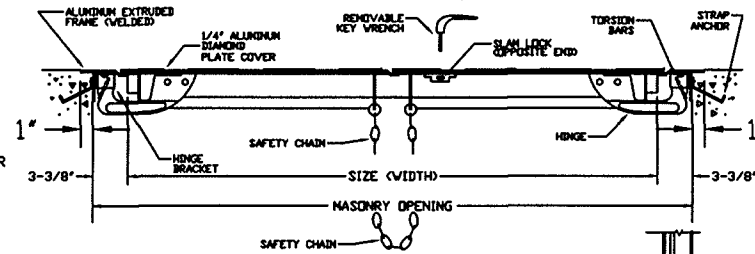
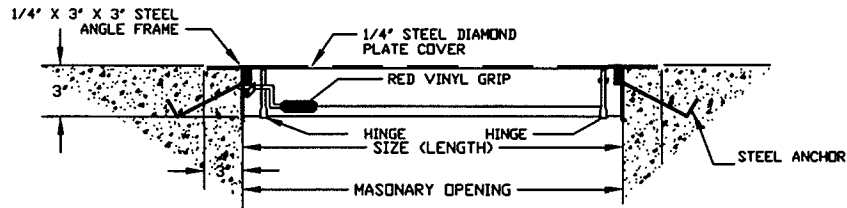


"Q" SINGLE LEAF STEEL OR
 "K" SINGLE LEAF ALUMINUM

"KD" DOUBLE LEAF ALUMINUM



STANDARD HATCH FOR METER VAULT PER. STD. 5.8

NOM. METER SIZE	HATCH TYPE	SIZE		MATERIAL	WT. (LBS)
		WIDTH	LENGTH		
3'	Q-4 K-4	3' 0"	3' 0"	STEEL - ALUM.	210 - 95
4'	Q-4 K-4	3' 0"	3' 0"	STEEL - ALUM.	210 - 95
6'	K-5	3' 6"	3' 6"	ALUMINUM	120
8'	KD-2	4' 0"	4' 0"	ALUMINUM	150
10'	KD-3	4' 0"	6' 0"	ALUMINUM	225

STANDARD HATCH FOR FIRE VAULT PER. STD. NO. 5.25

NOM. FIRE LINE SIZE	HATCH TYPE	SIZE		MATERIAL	WT. (LBS)
		WIDTH	LENGTH		
3'	K-5	3' 6"	3' 6"	ALUMINUM	120
4'	KD-2	4' 0"	4' 0"	ALUMINUM	150
6'	KD-3	4' 0"	6' 0"	ALUMINUM	225
8'	KD-3	4' 0"	6' 0"	ALUMINUM	225
10'	KD-3	4' 0"	6' 0"	ALUMINUM	225

NOTES:

1. UNITS COMPARABLE TO THIS BRAND WILL BE ACCEPTABLE IF APPROVED BY CITY ENGINEER.
2. THE BILCO CO.
P.O. BOX 1203
NEW BERN, CONN. 06505

STANDARD HATCH FOR VAULTS

CITY OF ROCKY MOUNT
 DEPT. OF ENGINEERING

REVISIONS		
NO	DATE	DESCRIPTION

APPROVED

-

DATE

04-08-04

STD. NO.

5.26

REVISION

-