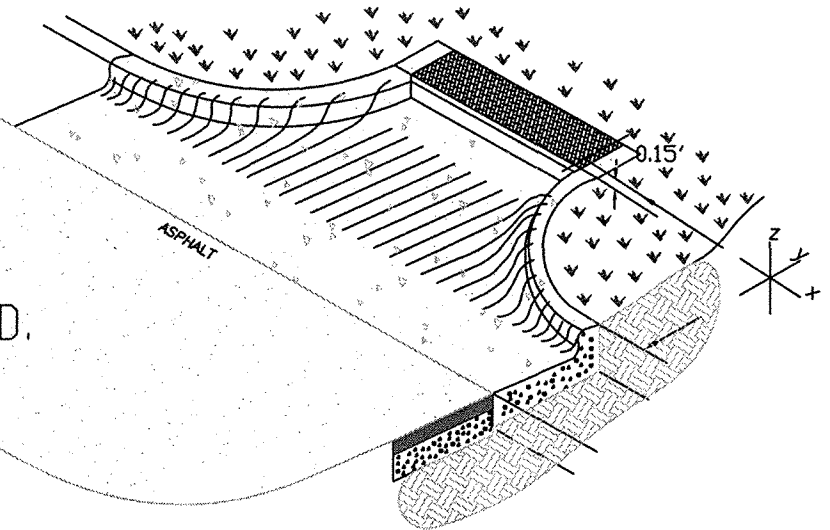
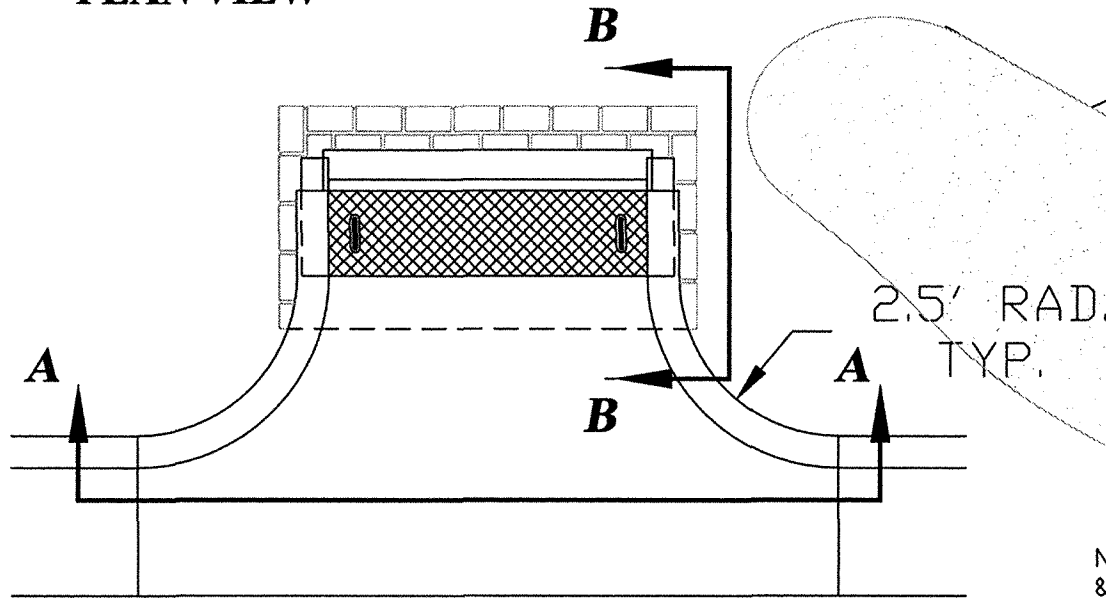


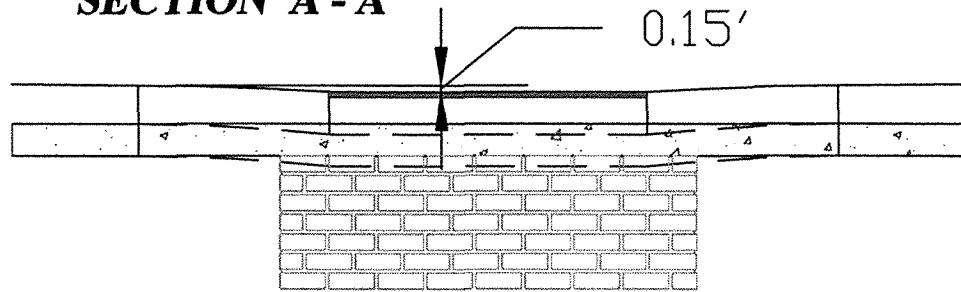
**ISOMETRIC VIEW**

**PLAN VIEW**

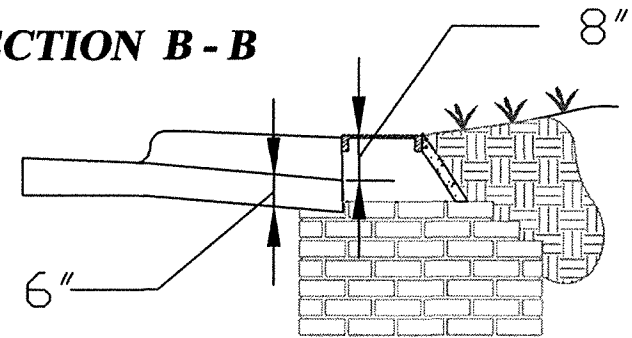


NOTE: FOR CONNECTION TO ROLL-TYPE CURB & GUTTER, PROVIDE 5' MIN. TRANSITION ON OUTSIDE OF RADIUS, EACH SIDE.

**SECTION A - A**



**SECTION B - B**



**OFFSET CURB OPENING INLET**

**CITY OF ROCKY MOUNT  
DEPT. OF ENGINEERING**

**APPROVED**

-

**DATE**

04-23-04

**STD. NO.**

6.3A

**REVISION**

-

REVISIONS		
NO	DATE	DESCRIPTION