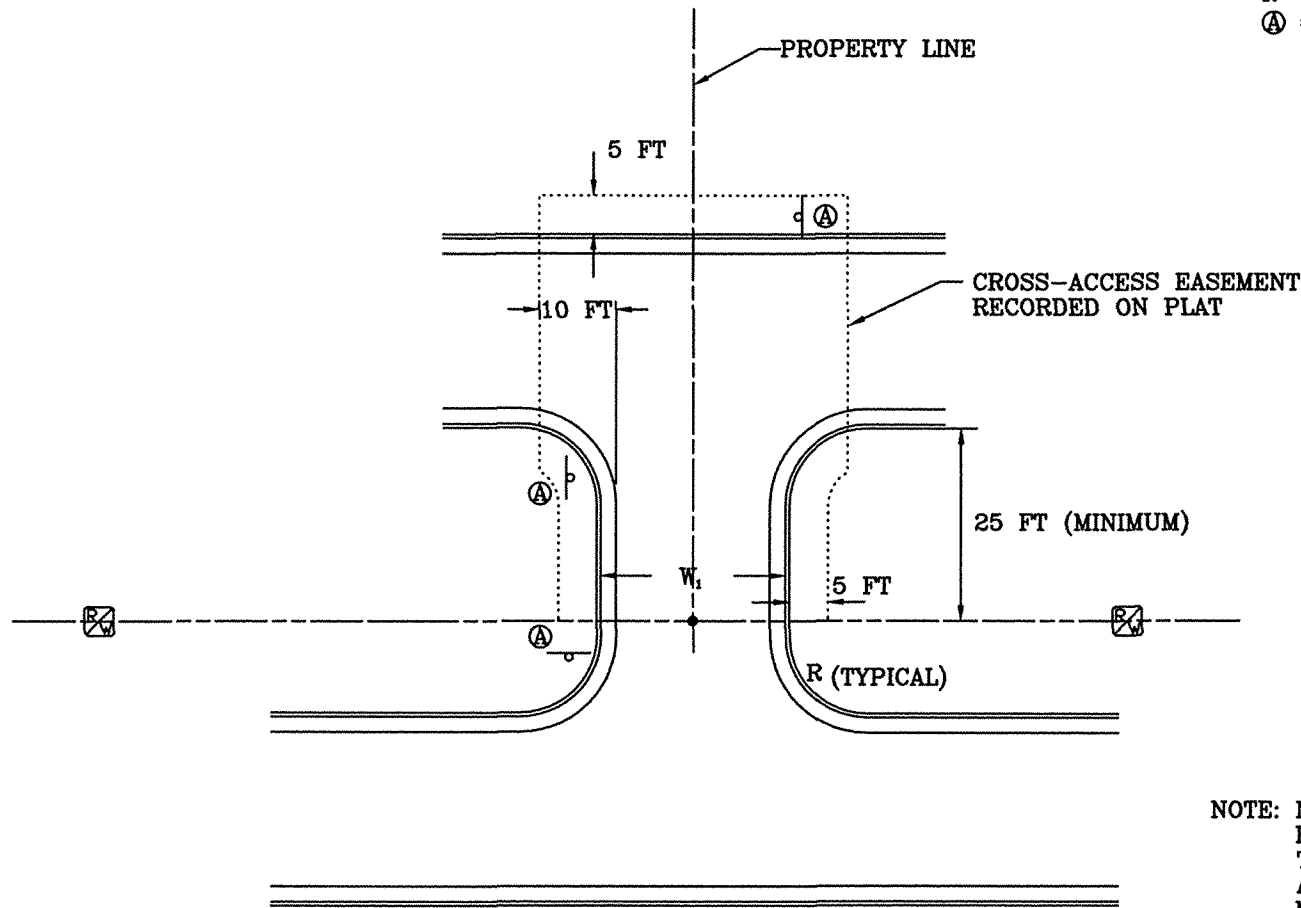


$W_1$  = 24 FT MINIMUM  
 $R$  = 5 FT MIN, 30 FT MAX  
 Ⓐ = STOP SIGN, 30" X 30"



NOTE: NO PARKING SPACES ARE TO BE LOCATED WITHIN 25 FT OF THE SHARED INTERSECTION WHEN MEASURED ALONG THE CURB LINE (37 FT IF MEASURED TO THE PROPERTY LINE BISECTING THE INTERSECTION)

### SHARED DRIVEWAY CONFIGURATION

CITY OF ROCKY MOUNT  
 DEPT. OF ENGINEERING

APPROVED

STD. NO.

DATE

REVISION

05-26-03

7.13

REVISIONS		
NO	DATE	DESCRIPTION